

IMPACT

in 2024



**WORLD
LAND
TRUST**

Saving land
Saving species

Charity Number 1001291

Myles Archibald

WLT Chair of Trustees



As Chair of Trustees, I am pleased to introduce the World Land Trust (WLT) Impact Report for 2024, a year that has again demonstrated the power of partnership in addressing the twin crises of biodiversity loss and climate change.

Our role as Trustees is to ensure the charity remains strategically focused, financially sound, true to its mission and, in all these areas, WLT strives to lead by example. The achievements outlined in this report are the result of an unwavering commitment to impact-driven conservation from our collective network of partners and supporters. 2024 was the penultimate year of our 2020–2025 Strategic Plan and we have seen our network of conservation partners expand their protected areas, strengthen local communities' involvement in conservation, and enhance the resilience of some of the world's most threatened habitats.

Our supporters remain at the core of all we do—their continued generosity enables us to respond with speed, flexibility, and integrity in an ever-changing world.

As we look to the future, the challenges are significant but so too is the opportunity. We are committed to scaling up our efforts, deepening our relationships with local partners, and ensuring that the protection of nature remains central to global environmental action.

Dr Catherine Barnard

CEO



2024 has been a year of both reflection and renewed purpose for WLT. After more than three decades of working in partnerships to protect threatened habitats, the urgency of our mission has never been clearer. The escalating loss of biodiversity and ever-worsening impacts of climate change are stark reminders that conservation is not a luxury, it is an irrefutable necessity.

Despite the challenges faced globally, I am delighted to report that our approach continues to deliver tangible results on the ground. By supporting our network of conservation partners, we have helped safeguard over 173,858 hectares (429,612 acres) of irreplaceable habitat this year alone, from Amazonian Ecuador to the foothills of the Himalayas. These are not just statistics, they represent living, breathing ecosystems home to jaguars, elephants, and thousands of lesser-known and as-yet-unrecorded species that depend on these places for survival.

At the heart of our success is a model built on trust. Our partners know their landscapes better than anyone, and it is their expertise, commitment, and vision that drive the success of every hectare protected. We are equally grateful to our supporters—individuals, businesses, and institutions, whose generosity powers this work. Each donation is a vote for a thriving, more resilient planet.

At WLT, we remain hopeful for the future, as the pressures on natural ecosystems mount, so too does our resolve to act. We will continue to grow our impact; champion locally-led conservation and ensure that every donation entrusted to us delivers lasting change.

Thank you for joining us in protecting nature, for wildlife, for people, and for the future of the world we all share.



2024 IN FOCUS

2024, the penultimate year of our strategic plan, saw WLT continue to strive for the ambitious goals set out in our strategy with our still-growing network of conservation partners. Globally, the year recorded the highest-ever rate of forest loss due to fires, with this contributing an unprecedented almost 50% of total global forest loss. Inevitably our partners' reserves could not escape this threat.

Despite this, with our support, our partners managed to keep forest loss below our targeted -0.35% in 87% of

reserves that were acquired in, or prior to, 2024. Unfortunately, particularly bad fires impacted three reserves in Guatemala.

With climate change driving the increasing severity of environmental disasters such as wildfires more each year, the support of our donors is ever more crucial. The forest loss across the world in 2024 was staggering, but the urgent action undertaken by our conservation partners in so many reserves shows that preserving habitats even in the face of growing and unpredictable threats is possible.

As well as preserving individual reserves, connection is pivotal to conservation. In 2024, our supporters helped protect six corridors: in Kenya, Guatemala, and Tanzania, and by monitoring wildlife in our supported projects, we found that more than 98% of key biodiversity was preserved. The preservation of so many species, including 135 species classified as globally threatened by the International Union for Conservation of Nature (IUCN), at a time of global biodiversity crisis is evidence of the impact that can be achieved with direct conservation action.

Africa

- A Rocha Kenya
- Big Life Limited
- Environment and Rural Development Foundation
- Environmental Defenders
- Fundação Kissama
- Kara-Tunga Foundation
- Kasanka Trust Ltd
- Missouri Botanical Garden's Madagascar Program
- Nature Kenya
- Overberg Renosterveld Trust
- Planet Madagascar Association
- Reforest Africa
- Southern Tanzania Elephant Program
- Tanzania Forest Conservation Group
- Gorongosa Restoration Project
- The Environmental Conservation Trust of Uganda
- Wild Tomorrow

Asia

- Applied Environmental Research Foundation
- Foundation for the Preservation of Wildlife and Cultural Assets
- HUTAN
- Koshi Tappu Kangchenjunga Biodiversity Education Livelihood Terra-Studio
- Philippine Reef and Rainforest Conservation Foundation
- Snow Leopard Trust
- Viet Nature Conservation Centre
- Wildlife Trust of India

Central America

- Asociación Ecológica de San Marcos de Ocotepeque
- Belize Maya Forest Trust
- Conservación de Anfibios A.C
- Corozal Sustainable Future Initiative
- Fundación para el Ecodesarrollo y la Conservación
- Grupo Ecológico Sierra Gorda
- Naturaleza y Cultura Sierra Madre
- Programme for Belize

Conservation partners

South America

- Asociación Amazónicas por la Amazonía
- Asociación Armonía
- Asociación Civil Provita
- Fundación Biodiversidad Argentina
- Fundación Biodiversa Colombia
- Fundación EcoMinga
- Fundación Guanacas bosques de niebla
- Fundación Hábitat & Desarrollo
- Fundación Jocotoco
- Fundación Natura Bolivia
- Fundación Patagonia Natural
- Fundación ProAves Colombia
- Fundación Proyecto Tití
- Guyra Paraguay
- Instituto Marcos Daniel
- Natura Argentina
- Naturaleza, Tierra y Vida
- Naturaleza y Cultura in Ecuador
- Naturaleza y Cultura in Peru
- Reserva Ecológica de Guapíaçu
- Fundación Rewilding Argentina

WLT's achievements and performance in 2024

Total priority land saved

In 2024, WLT saved 244,342 ha of priority land, 173,858 ha (71%) of which was funded solely by WLT. A further 70,484 ha was co-funded. Note that we only recognise land saved at the point of legal acquisition. There is a variable time-lag between committing to a project and land acquisition, with over 600,000 hectares committed but not yet legally acquired.

Total priority habitats connected

In 2024, WLT supported six corridors: two within A Rocha Kenya's (ARK's) Dakatcha Nature Reserve connecting existing partner properties; two within Fundación para el Ecodesarrollo y la conservación's (FUNDAECO's) Cerro San Gil project area; two within Tanzania Forest Conservation Group's (TFCG's) Village Land Forest Reserves (VLFR) project area.

Forests maintained in WLT-backed reserves

Globally, 2024 saw the worst-ever recorded forest loss rates due to fires, amounting to an unprecedented c.50% of total global forest loss which inevitably impacted our partners' reserves. Despite this, 87% (93 out of 107 assessed projects) of reserves acquired during, or prior to, 2024 managed to keep forest loss below our -0.35% target. The higher overall rate of forest loss for our KPI was largely driven by wildfires in Guatemala that impacted three reserves.

| Year | Target | Performance |
|------|--------------|-------------|
| 2021 | 160,000 ha | 189,349 ha |
| 2022 | 340,000 ha | 261,062 ha |
| 2023 | 540,000 ha | 413,267 ha |
| 2024 | 760,000 ha | 686,162 ha |
| 2025 | 1,000,000 ha | |

| Year | Target | Performance |
|------|--------------|--------------|
| 2021 | 400,000 ha | 1,216,758 ha |
| 2022 | 800,000 ha | 1,568,592 ha |
| 2023 | 1,200,000 ha | 1,570,910 ha |
| 2024 | 1,600,000 ha | 1,708,948 ha |
| 2025 | 2,000,000 ha | |

| Year | Target | Performance |
|------|--|-------------|
| 2021 | Forest loss rates not surpassing -0.35%* | -0.30% |
| 2022 | <-0.35% | -0.27% |
| 2023 | <-0.35% | -0.17% |
| 2024 | <-0.35% | -0.79% |
| 2025 | <-0.35% | |

* This includes adjustment of the 2021 and 2022 figures according to latest Hansen estimates.

Biodiversity maintained in WLT-backed reserves

In 2024, WLT's partners reported information on over 365 populations of key indicator species at 73 reserves that WLT has helped to establish, with partners monitoring the ongoing presence of species at these sites. This includes data for more than 135 species that are globally threatened (classified as Critically Endangered, Endangered or Vulnerable by IUCN).

Number of active WLT partners

WLT added one further conservation partner in 2024 supporting Tanzania's Reforest Africa and bringing the total number of active partners to 53.

Income increasing by at least 15% year on year

Missing the 2024 income target was mainly attributable to a fall in legacy income and a reduction in donations from trusts and foundations but also reflects a challenging fundraising environment.

Spending on growth and future income

Brand promotion to reach larger numbers of supporters increased our spend, but we have not yet reached our target of investment required.

| Year | Target | Performance |
|------|--|-------------|
| 2021 | Population persistence levels of key indicator species at >98% | 98.88% |
| 2022 | >98% | 98.91% |
| 2023 | >98% | 97.15% |
| 2024 | >98% | 98.80% |
| 2025 | >98% | |

| Year | Target | Performance |
|------|--------|-------------|
| 2021 | 30 | 37 |
| 2022 | 33 | 47 |
| 2023 | 36 | 52 |
| 2024 | 39 | 53 |
| 2025 | 42 | |

| Year | Target | Performance |
|------|--|-----------------------|
| 2021 | +15% growth on 2020 income of £7,122,000 | £8,192,000 (+15.02%) |
| 2022 | +15% growth on previous year's income | £8,790,000 (+7.3%) |
| 2023 | +15% growth on previous year's income | £10,232,000 (+16.39%) |
| 2024 | +15% growth on previous year's income | £8,699,000 (-14.9%) |
| 2025 | +15% growth on previous year's income | |

| Year | Target | Performance |
|------|--------|-------------|
| 2021 | 5% | 1.5% |
| 2022 | 5% | 2.2% |
| 2023 | 5% | 2.4% |
| 2024 | 5% | 4.2% |
| 2025 | 5% | |

Impact in 2024

Buy an Acre

In 2024, supporters of WLT's flagship Buy an Acre programme helped to protect vital land in some of the most threatened areas in the world.

Two WLT partners, Nature Kenya and A Rocha Kenya (ARK), continued their work in Kenya's Dakatcha Woodland while, in Argentina, supporters helped Fundación Biodiversidad Argentina (FBA) complete fundraising for more than 5,400 ha (13,370 acres) of Dry Chaco Forest. Elsewhere in Argentina's Somuncurá Plateau, Fundación Hábitat y Desarrollo (FHD) continued to expand the Somuncurá Plateau Reserve by 4,605 hectares (11,379 acres).

In South Africa, Buy an Acre is in the process of supporting Overberg Renosterveld Trust (ORT) in acquiring 208 hectares (514 acres) of a renosterveld, a critically threatened habitat unique to the Overberg region.

In Brazil, Buy an Acre contributed to the purchase of the 1,636-ha (4,042-acre) Cozzolino property, helping Reserva Ecológica de Guapiaçu (REGUA) to protect some of the last remnants of Brazil's Atlantic forest.



Somuncurá Plateau



Chaco Taguá



Renosterveld



Dakatcha Woodland



Atlantic Forest

Image credit: Clockwise beginning from top left - Fundación Somuncura, Fundación Biodiversidad Argentina, Chris Hodgson, REGUA, Overberg Renosterveld Trust

Plant a Tree

WLT's Plant a Tree programme continued to work directly with local communities to use nature-based solutions to tackle climate change and biodiversity loss.

In Armenia, Foundation for the Preservation of Wildlife and Cultural Assets' (FPWC) Caucasus Wildlife Refuge planted a staggering 70,000 trees. REGUA have restored 12 hectares (30 acres) of land in Brazil's Atlantic Forest in 2024. Despite severe droughts, REGUA successfully planted 21,000 now-thriving trees. With 28,000 trees planted in 2024, Wildlife Trust of India (WTI) are on track to completing their target of restoring 200 hectares (494 acres) with 150,000 trees.

119,000 trees
planted with
Plant a Tree
in 2024

28,000 trees
India

21,000 trees
Brazil

70,000 trees
Armenia

In addition to our Plant a Tree programme, in 2024, 248,775 trees were planted with WLT support across all projects:

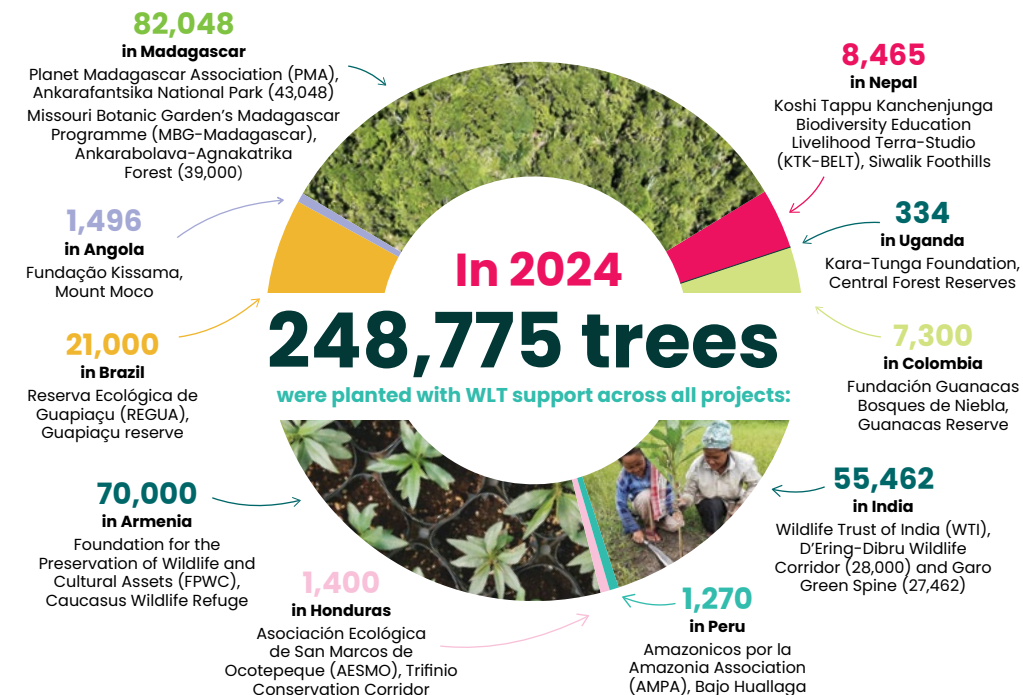
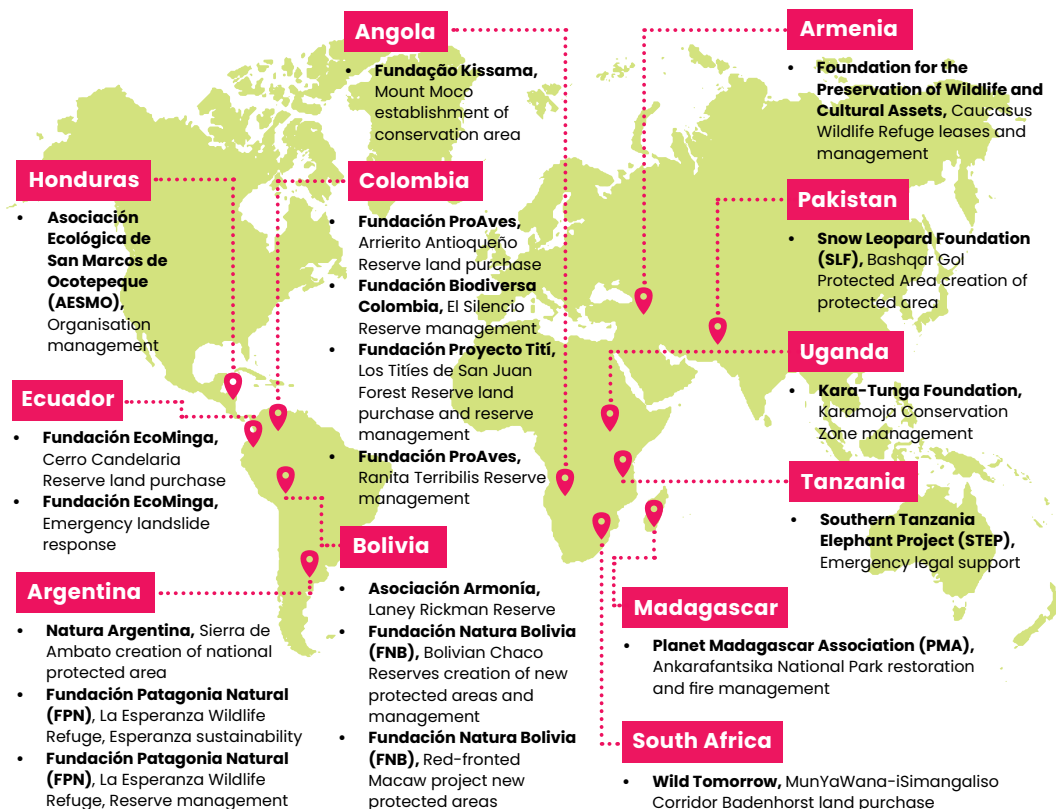


Image credit: Clockwise from top - MBG Madagascar Programme, WTI, FPWC

Action Fund

WLT's Action Fund supported 20 urgent conservation projects across 12 countries, providing relief for imminently threatened habitats from the cloud forests of Ecuador to the plains of Uganda. The Action Fund supported our partners to make emergency land purchases, respond to management needs as they arose, and redirect resources in response to rapidly changing conditions. In one such instance in June of 2024, much of Ecuador suffered its most severe rainstorm in several decades which resulted in flash flooding and landslides. The Action Fund was able to provide emergency support to aid recovery efforts, stabilise the areas, and restore infrastructure within the reserves.

20 projects across 12 countries supported by WLT's Action Fund in 2024



Keepers of the Wild

Rangers are the lifeblood of all WLT-backed reserves and are indispensable to the longevity of the projects, the continued safety of the wildlife within them, and the link between the conservation work of our partners and the communities that live in and around the protected areas. Through funding streams including our Keepers of the Wild programme, WLT directly supports the salaries of 64 rangers through 20 partners.

In addition to this, a further 374 community rangers were supported, not directly through their salaries but as part of wider projects, with a further nine partners.

Image credit: Roberto Pedraza Ruiz



Rangers supported by WLT across all projects in 2024

Argentina

Fundación Hábitat y Desarrollo (FHD), Somuncurá Plateau Reserve
Fundación Patagonia Natural (FPN), La Esperanza Wildlife Refuge

Armenia

Foundation for the Preservation of Wildlife and Cultural Assets (FPWC), Caucasus Wildlife Refuge

Bolivia

Asociación Armonía, Barba Azul Reserve

Brazil

Reserva Ecológica de Guapiáçu (REGUA), Guapiáçu Reserve

Colombia

Fundación Guanacas Bosques de Niebla, Guanacas Reserve
Fundación Proyecto Tití, Títes de San Juan Reserve
Fundación ProAves, Ranita Terribilis Reserve
Fundación ProAves, Arriero Antioqueño Reserve

Ecuador

Fundación Jocotoco, Buenaventura Reserve
Fundación EcoMinga, EcoMinga Reserves
Naturaleza y Cultura in Ecuador, Nangaritza Reserve

Honduras

Asociación Ecológica de San Marcos Ocotepeque (AESMO), AESMO Reserves

Kenya

Nature Kenya, Leleshwa Reserve
Nature Kenya, Msidunyi Forest reserve

Mexico

Conservación de Anfibios A.C., Cuetzalan Cloud Forest Amphibian Sanctuary
Grupo Ecológico Sierra Gorda (GESG), Sierra Gorda Biosphere Reserve

Nepal

Koshi Tappu Kanchenjunga Biodiversity Education Livelihood Terra-Studio (KTK-BELT), Special Community-Based Pangolin Conservation Area

Pakistan

Snow Leopard Foundation (SLF), Bashqar Gol Protected Area

Paraguay

Gurya Paraguay, Chaco Pantanal Reserve

Venezuela

Asociación Civil Provita, Chacaracual Community Conservation Area

Vietnam

Viet Nature Conservation Centre, Khe Nuoc Trong

Carbon Balanced

2024 was the hottest year in Earth's recorded history and with the rising global temperature reflected in each worsening extreme weather event, the climate crisis becomes more urgent with each passing day. While both national and international climate plans continue to fall short, our Carbon Balanced community is driving meaningful change.

Aligned with the Intergovernmental Panel on Climate Change's (IPCC) recommendations, WLT's Carbon Balanced programme supports the protection and restoration of one of nature's most effective carbon capture systems: highly biodiverse tropical forests.

While the Carbon Balanced projects in Vietnam's Khe Nuoc Trong Forest with Viet Nature and Ecuador's Nangaritza Valley with Nature and Culture in Ecuador (NCE) were completed in 2024, existing WLT partner Environmental Conservation Trust of Uganda (ECOTRUST) joined the Carbon Balanced programme

with a forest restoration project in the iconic Albertine Rift region of Uganda. By working with local farmers to implement sustainable land use and agroforestry practices, ECOTRUST will store carbon and reduce deforestation in one of Africa's most richly biodiverse landscapes while enhancing the livelihoods of the people of the region.

In 2024, WLT's Carbon Balanced community supported 6 projects in 5 countries through our partners:



Fundación para el Ecodesarrollo y la conservación

Conservation Coast in Carribean Guatemala

35,000 tCO₂e



Environmental Conservation Trust of Uganda

Trees for Global Benefits

75,000 tCO₂e



Naturaleza y Cultura Ecuador

Promoting ecosystem connectivity in the south of Ecuadorian Amazon

7,581 tCO₂e



Viet Nature

Protection of biodiversity and enhancement of ecosystem services of the Dong Chau – Khe Nuoc Trong Forest

42,659 tCO₂e



Grupo Ecológico Sierra Gorda

Biodiverse Carbon in Xilitla

28,782 tCO₂e

Ensuring connectivity in a network of private reserves of Sierra Gorda

24,134 tCO₂e

Creating Space for Nature in KwaZulu-Natal

The Connecting Ukuwela spring appeal supported WLT's partner Wild Tomorrow in acquiring Sisonke Farm—the missing piece of a wildlife corridor in South Africa's KwaZulu-Natal province. The £621,000 raised by the appeal enabled Wild Tomorrow to fund a 148.5-hectare (367-acre) expansion of the existing Greater

Ukuwela Nature Reserve (GUNR). By integrating Sisonke Farm into the GUNR, the larger reserve, which sits between the MunYaWana Conservancy and iSimangaliso Wetland Park, is now connected, creating an unbroken thread of protected habitat from the Lebombo Mountains to the Indian Ocean.



Helping Communities to safeguard their land in Northeast Ecuador

2024's autumn Protecting the Ecuadorian Amazon appeal, which included WLT's twelfth Big Match Fortnight, supported our partner Nature and Culture in Ecuador to bring local governments and Indigenous communities together over the next four years to protect an estimated 747,000 ha (1.5 million acres) of Amazon rainforest in

Orellana province. The £1.3 million raised by the appeal will support Nature and Culture in Ecuador with the logistical work required to create a Provincial Protected Area which will help safeguard the incomparable biodiversity of the Amazon rainforest and support the rights of the indigenous communities who live there.



62 PROJECTS

funded with 41 partners across 24 countries

Including 15 projects newly WLT-funded in 2024

244,342 HA

of threatened habitats protected

Including 5 Buy an Acre projects

And 20 projects across 12 countries supported by the Action Fund

SINCE 1989, 1,340,393 HA

directly funded by WLT across all projects

A further 1,446,171 ha have been co-funded by WLT

2,786,564 ha have been protected by WLT partners in all

And 12,914,911 ha have been connected by WLT-funded corridors and extensions

South Africa
• Renosterveld

Kenya
• Dakatcha Woodland

Argentina
• Chaco Taguá
• Somuncurá Plateau

Brazil
• REGUA

1,737 MORE SPECIES

recorded within WLT projects

64 RANGERS

directly funded

working across 14 countries with 20 partners

374 community rangers supported across 7 countries with 9 partners

248,775 TREES

planted across all WLT programmes

Across 10 countries including
3 Plant a Tree projects

28,000
in India

21,000
in Brazil

70,000
in Armenia

3,362,691 TREES
planted since 1989

Over 213,156 tCO₂e IN CARBON CREDITS

contributed towards unavoidable emissions through the Carbon Balanced programme



A Year of Conservation Around the World

Here are some of the impacts made possible by our community in 2024

Fundación EcoMinga's Río Anzu Reserve was recognised as an Other Effective Area-based Conservation Measure (OECM).

Pristimantis normaewingae, a new frog species was recorded in Fundación EcoMinga's Cerro Candelaria Reserve.

Fundación Natura Bolivia (FNB) and Naturaleza, Tierra y Vida helped to pass a new law – the Charagua Iyambae Protected Areas Law – to strengthen protection of 5 million hectares (12.4 million acres) of forest land in Bolivia's Gran Chaco.

Overberg Renosterveld Trust (ORT) GPS tagged 15 Black Harrier (*Circus maurus*) individuals to better understand its migration patterns as part of its Species Action Plan.

A Rocha Kenya (ARK) rangers discovered a new Sokoke Scops Owl (*Otus ireneae*) roosting site in the Dakatcha Nature Reserve.

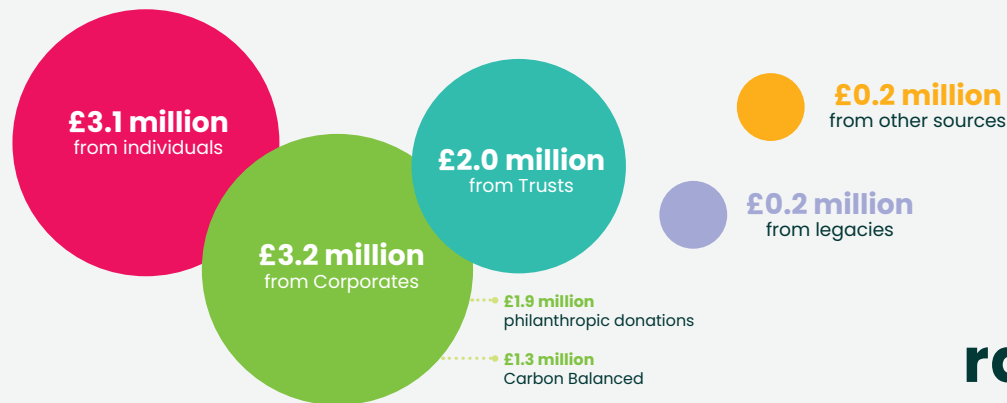
The presence of Anosy Mouse Lemur (*Microcebus tanosi*) and the Geoffrey's Dwarf Lemur (*Cheirogaleus major*) in Missouri Botanical Garden's Madagascar Programme (MBG-Madagascar) Ankarabolava-Agnakatrika Forest Protected Area was confirmed by lemur expert Dr Marina Blanco.

Foundation for the Protection of Wildlife and Cultural Assets (FPWC) has joined the Forest Alliance – a coalition of local organisations focused on reforestation.

Wildlife Trust of India (WTI) organised the Elephant Cup Football Tournament as part of the Solung Festival – one of the most important cultural festivals for the Indigenous Adi community of Arunachal Pradesh.

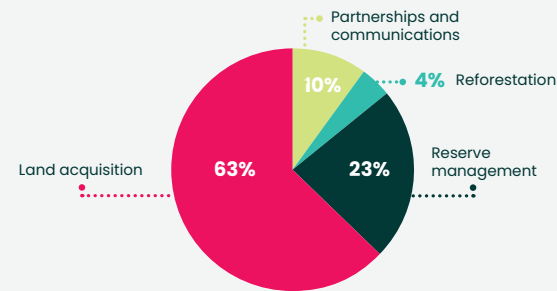
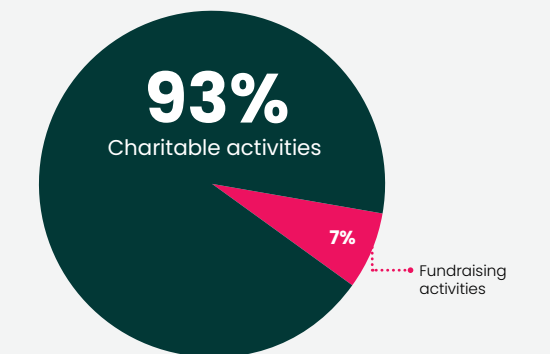
Income and Expenditure in 2024

Past, present and projected WLT income



Income of
£8.7 million
raised in 2024

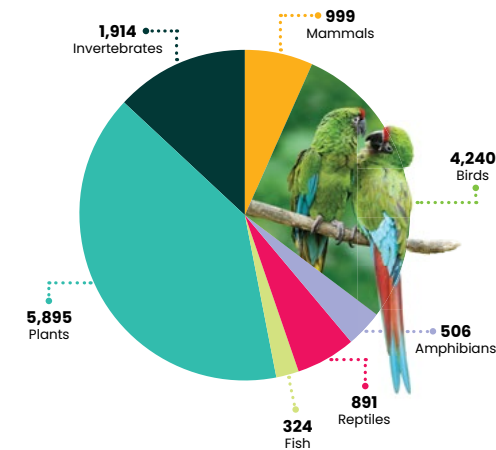
£10.7 million
spent by WLT in 2024



£9.9 million spent
on charitable activities

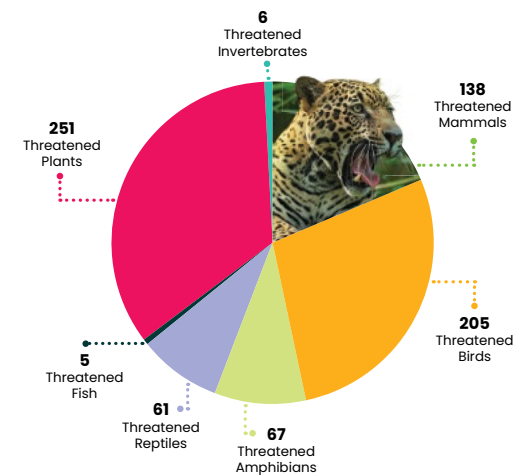
Species Protected by WLT since 1989

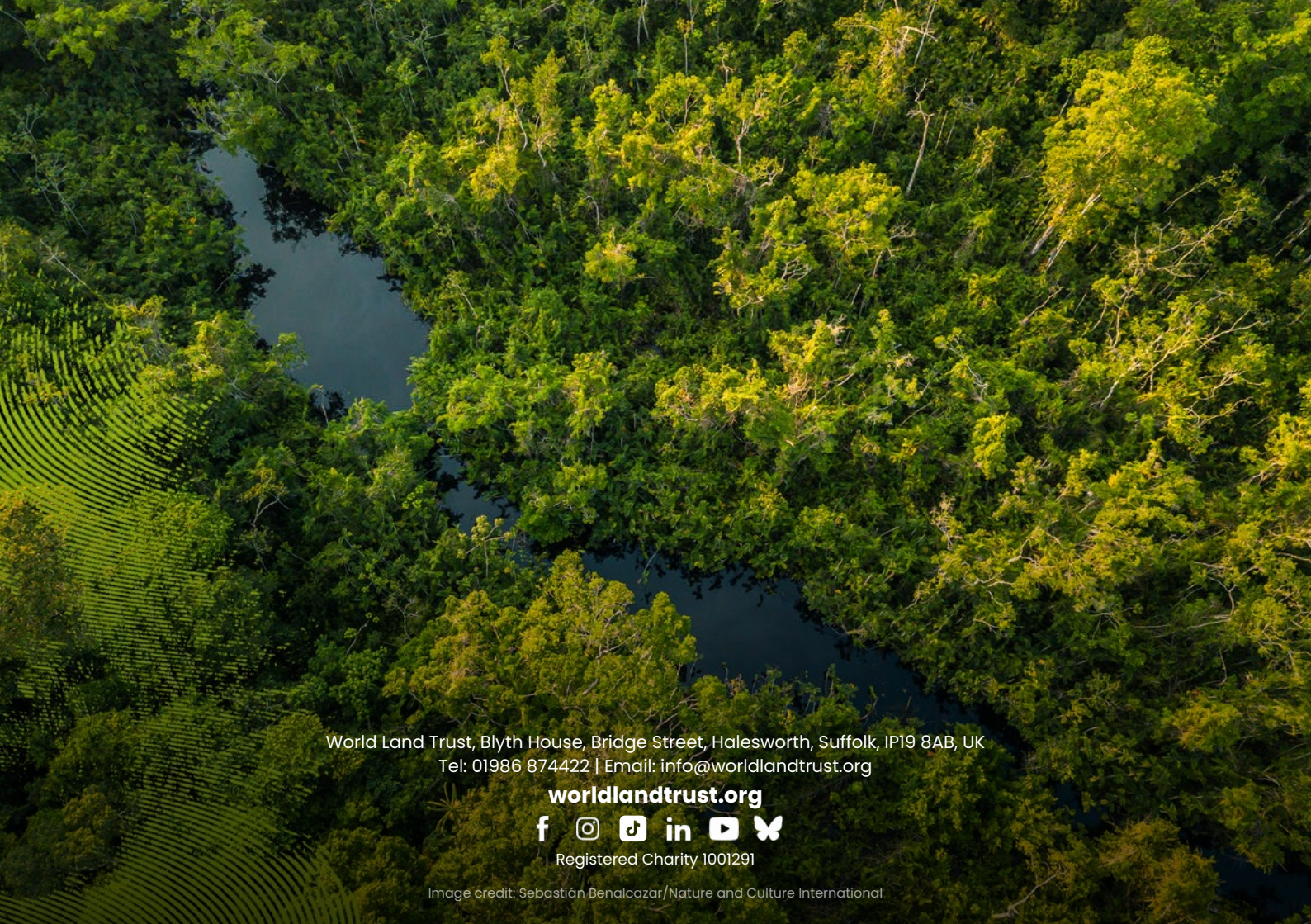
14,825
total known species
in WLT project areas:



760

total known globally
Threatened species in
WLT project areas:





World Land Trust, Blyth House, Bridge Street, Halesworth, Suffolk, IP19 8AB, UK
Tel: 01986 874422 | Email: info@worldlandtrust.org

worldlandtrust.org



Registered Charity 1001291

Image credit: Sebastián Benalcazar/Nature and Culture International