



Registered Charity No. 1001291



SAFEGUARDING THE DRY CHACO FOREST WITHIN ARGENTINA'S TRASLASIERRA NATIONAL PARK

Our Buy an Acre project with Aves Argentinas



Argentine Rainbow Boa

Country

Argentina

Partner/ Organisation

Aves Argentinas

Biome

Tropical and Subtropical
Grasslands, Savannas &
Shrublands

Ecoregion

Dry Chaco

Habitats

Located within Argentina's Dry Chaco Forest, the 46,538-hectare (114,998-acre) project area includes a diverse mosaic of habitats. Among these are mature forests, salt flats, meadow grasslands, and shrubland. As such, there is a wide diversity of plant species here including Dry Chaco forest trees such as Horco Quebrachos (*Schinopsis haenkeana*), drought-tolerant White Quebracho (*Aspidosperma quebracho-blanco*), and salt-tolerant shrubs. Given the large area covered by the project site, certain parts are in good conservation condition while others are currently degraded due to extensive cattle ranching.

Project summary

The Traslasierra National Park contains one of the southernmost strongholds of Dry Chaco forest within Argentina. Despite being home to extremely precious wildlife, such as the Endangered Crowned Solitary Eagle (*Buteogallus coronatus*), this little-known ecosystem is under threat from decades of deforestation. Even within the park itself, much of the land is still privately owned and undergoing deforestation.

But with your support, this Buy an Acre project will enable our partner Aves Argentinas to purchase 2,606 hectares (6,440 acres) of land, as part of a wider acquisition of 46,538 hectares (114,998 acres). This will significantly advance the protection of the Dry Chaco Forest ecosystem and also increase connectivity to neighbouring reserves such as the Chancaní Provincial Park, Salinas Grandes Provincial Reserve, and Ansenuza National Park. On top of this, the newly acquired land will increase connectivity to the Las Mesillas property protected by another Argentinian partner Fundación Biodiversidad Argentina (FBA).

Main threats to the area

Dry Chaco forests are rapidly disappearing, with one of the highest deforestation rates on Earth. In Córdoba Province, only 3% of the native forests remain and the Traslasierra National Park is one of the southernmost strongholds for this threatened forest type. With slow-growing species like *Aspidosperma* common in the Dry Chaco, the landscape is especially vulnerable to lasting damage. Other threats include timber extraction, invasive species, fire, and cattle grazing, which currently takes place on around 5,000 hectares (12,355 acres) of the property.

Although part of a National Park, this property is privately owned, limiting its protection. Acquiring this property will give park authorities the power to safeguard it into the long-term – securing a bright future for the Dry Chaco's unique habitats and wildlife.

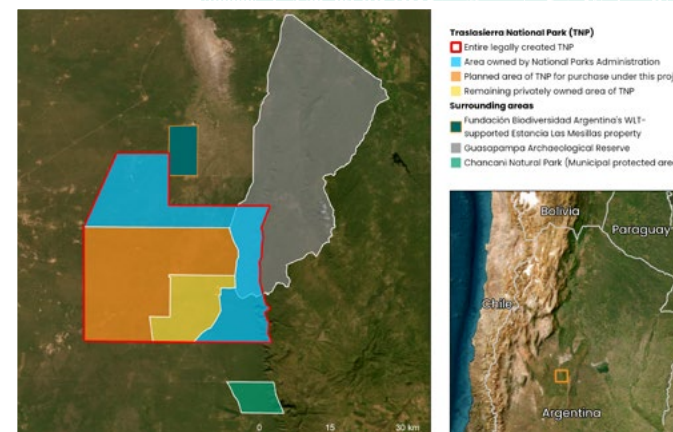
Global prioritisation

The Traslasierra National Park falls within the Gran Chaco Centre of Plant Diversity – a region containing over 3,400 plant species, many of which are endemic. Smaller areas of the park (0.6%) also overlap with the Dry Chaco Conservation Imperatives Area and the Chancaní y Sierras de Pocho Key Biodiversity Area.

Biodiversity

The Traslasierra National Park contains an extraordinary diversity of species, which include 35 mammal species. Among these are the Endangered Berg's Tuco-tuco (*Ctenomys bergi*) and several species only found within the Chaco ecosystem itself, including the Chacoan Peccary (*Catagonus wagneri*) and Chacoan Naked-tail Armadillo (*Cabassous chacoensis*).

The diversity of bird species is similarly high with over 230 species in total, including the Chaco Owl (*Strix chacoensis*) and the Endangered Crowned Solitary Eagle (*Buteogallus coronatus*). There are also 30 reptile species and 13 amphibian species, many of which possess unique adaptations to the Chaco's arid conditions. These include the Llanos Frog (*Lepidobatrachus llanensis*) and the Painted Belly Leaf Frog (*Phyllomedusa sauvagii*). Among reptiles, noteworthy species are the Red Tegu (*Salvator rufescens*) and Rainbow Boa (*Epicrates alvarezii*), which is the flagship species of the National Park.



Key species'

Mammals

Berg's Tuco-tuco (*Ctenomys bergi*, EN and endemic);
Chacoan Peccary (*Parachoeerus wagneri*, EN);
Chacoan Naked-tailed Armadillo (*Cabassous chacoensis*, NT)

Birds

Crowned Solitary Eagle (*Buteogallus coronatus*, EN);
Andean condor (*Vultur gryphus*, NT)

Reptiles

Argentine Rainbow Boa (*Epicrates alvarezii*, NT)

'The Red List of Threatened Species, maintained by the International Union for the Conservation of Nature (IUCN), includes categories of Critically Endangered (CR), Endangered (EN), Vulnerable (VU), Near Threatened (NT), Least Concern (LC) and Data Deficient (DD).



Chacoan Naked-tailed Armadillo



Chacoan Peccary



Andean Condor

Local Communities

There are two rural communities who live adjacent to the national park in the villages of Chancaní and El Chacho. The main livelihood is derived from small-scale farming as well as construction work in nearby cities.

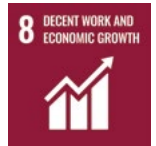
Aves Argentinas works closely with local communities in both environmental education and the creation of alternative livelihoods. As part of this, Aves Argentinas will provide training in the provision of sustainable ecotourism, helping ensure that the local population benefit from increased visitor numbers to the region.

Partner/Organisation

Aves Argentinas is a conservation organisation dedicated to the protection of birds, their habitats, and biodiversity, while supporting the sustainable use of natural resources. Their work covers protected area creation, environmental education, and improving the sustainability of cattle grazing. As the BirdLife International Partner for Argentina, they are dedicated towards seeking science-based solutions to conservation issues.

WLT partnered with Aves Argentinas in 2025 to support this project and the increased protection of the Traslasierra National Park.

UN Sustainable Development Goals directly advanced by this project:



World Land Trust, Blyth House, Bridge Street, Halesworth, IP19 8AB, Suffolk UK
Tel: 01986 874422 | Email: info@worldlandtrust.org

Image credits:
Cover - Diego Grandi/Shutterstock
(Crowned Solitary Eagle)
Page 2 - Canva
Page 3 - Pablo Capovilla,
Maloff/Shutterstock
Page 4 - Canva

worldlandtrust.org



Registered Charity 1001291