

Your impact as a Plant a Tree supporter

How your donations have planted the seeds of a better future
for people and planet in Borneo, Brazil, India and Kenya



A tree today, a forest tomorrow

What your Plant a Tree donations are doing for conservation, communities and climate

Few gestures symbolise hope for a better planet like tree-planting. As a Plant a Tree supporter you're helping to bring trees in their hundreds of thousands to some of the world's most threatened ecosystems. On International Day of Forests 2022, we'd like to celebrate you – and the impact you've been delivering for conservation, communities and our global climate.



They clean our air, and store carbon away from the atmosphere. Food, oxygen, shelter, shade, protected soils and water sources, safety against climate disasters – this much and more they give to us, and to every other being on this planet.

Trees are the bedrock of life as we know it and on International Day of Forests (Monday 21 March 2022), you can look back and feel proud of what you've done for them. Together and since our foundation, WLT supporters like you have funded the planting of 2,457,900 native trees to restore threatened habitats across the world. In 2021 alone, your donations helped WLT partners plant **nearly 116,000 saplings across our four Plant a Tree projects** (you can discover them in the next few pages), reforesting Mount Kenya's slopes, India's elephant corridors, Borneo's orangutan rainforests and more.

By helping to bring trees to some of the most precious tracts of wilderness left on Earth, **you're championing a global cause.** Last year, the UN launched its Decade on Ecosystem Restoration because it believes we won't reverse climate change, biodiversity loss or poverty if we don't revive, by 2030, the ecosystems all life relies upon.

As a supporter of the UN's Generation Restoration, every tree you've funded through WLT – whether one, a hundred or more – puts us closer to this goal that will decide so much for our planet.

Much spotlight has been placed on the fact that tree-planting cannot fight planetary crises alone; that we need to get it right. WLT's approach means **you can be sure your Plant a Tree donations are making the necessary impact.** In line with RBG Kew's 'golden rules' for tree-planting, we don't only prioritise world areas with the highest biodiversity and direct threats. We also see the saving of habitat as a priority, and the restoration work we fund takes place in land our partners have already protected through land purchases.

This combined focus – habitat protection followed by restoration – means the saplings you fund are the right species in the right places, unlocking the gift of connectivity for endangered wildlife.

And yet the impact goes beyond wildlife. Together, our four current Plant a Tree projects directly advance 10 UN Sustainable Development Goals, from No Poverty to Quality Education or Clean Water and Sanitation. Supported by your donations, this restoration work is protecting water sources, empowering women and creating local jobs in areas that sorely need them.

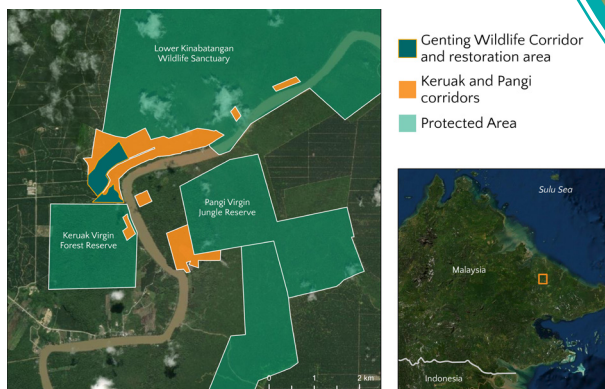
Like each individual tree in any forest, no two Plant a Tree supporters are alike but all of you – the fundraisers and donors, the committed corporate supporters – are joining forces for a living planet, and the approach is working. A Generation Restoration of driven supporters, nurturing a generation of forests; every tree planting the seeds of a better tomorrow for conservation, communities and our global climate. **This is your impact as a Plant a Tree supporter** and today, we want you to discover the difference you've been making in a pivotal decade.



Reforesting Borneo's Genting Wildlife Corridor

The impact you're making with WLT partner HUTAN

In Malaysian Borneo, Plant a Tree supporters are helping to restore some of the most biodiverse land on earth. In the Kinabatangan Floodplain, your donations are bringing native trees for WLT partner HUTAN to turn former oil palm plantations into lush rainforest, reviving habitats home to hundreds of species and creating conservation jobs for women from a nearby village. A new chance for wildlife, a new chance for local communities.



© HUTAN

THE SPECIES YOU'RE HELPING



Bornean Orangutan



Asian Pygmy Elephant



Rhinoceros Hornbill

YOUR IMPACT AT A GLANCE

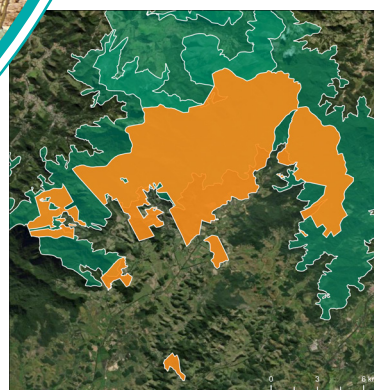
- The Kinabatangan Floodplain has lost 80% of its primary forests but through a holistic approach, you're helping to give a lifeline to this landscape. The trees you're funding are helping HUTAN to reforest habitat that is also being protected through land purchases
- The 29 native tree species being planted are a confirmed food source for orangutans. They are helping to restore corridors crucial to the genetic diversity of these great apes, following the crash of local populations from 20,000 individuals in 1900 to about 780 today
- And yet it's not just about orangutans. Your donations are helping to restore the home of hundreds of species from elephants to hornbills, pangolins or cloud leopards, reconnecting the forest habitat they all need to roam and thrive after years of habitat loss and fragmentation
- Your donations are helping to create local jobs in an area where they are scarce. Tree-planting is being taken care of by HUTAN's squad of women from the local *orang sungai* (or 'river people') community, who handle all stages (planting, maintaining and monitoring) of the process

Reforesting Brazil's Reserva Ecológica de Guapiaçu

The impact you're making with WLT partner REGUA



Only 7% of Brazil's once-vast Atlantic Forest remains standing today but thanks to you, a better future is possible. Your donations are bringing trees in their tens of thousands to the Reserva Ecológica de Guapiaçu (REGUA), a gift of safety and connectivity for hundreds of species that is unlocking job opportunities and other benefits for local people. This is how you're giving a new lease of life to one of the most threatened forest regions in the world.



REGUA Reserve
Protected Area



YOUR IMPACT AT A GLANCE

- Like in Borneo, the tree-planting you're supporting packs much more effectiveness because it is part of a holistic conservation approach. The trees you're funding are reforesting a reserve expanded by our partner REGUA through land purchases
- Your donations are helping to restore one of the world's top five conservation hotspots. Within REGUA's limits, surveys have found 479 bird species (120 of them Atlantic Forest endemics); 73 amphibian and 37 reptile species; and more
- The wildlife you're handing a lifeline to includes mammals like the Southern Woolly Spider Monkey or muriqui, the largest primate of the Americas and a Critically Endangered species thought to number fewer than 1,500 individuals in its entire range
- With your help, this project is unlocking tree-planting and tree nursery jobs for local people, as well as ecosystem services for communities – such as higher drinking water quality and ecotourism – and a green tax rebate for local authorities

THE SPECIES YOU'RE HELPING



Southern Woolly Spider Monkey



Lowland Tapir

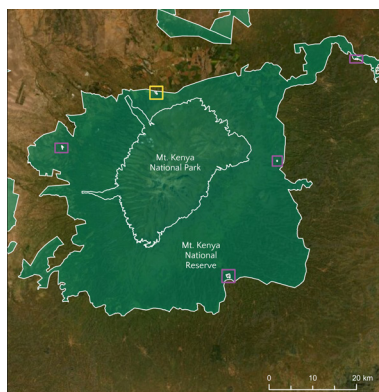


Brazilian Ruby Hummingbird

Restoring habitats at Mount Kenya Forest Reserve

The impact you're making with WLT partner Nature Kenya

At Mount Kenya, a 'water tower' forest was under threat after historic logging gave way to invasive species, overgrazing and intensified forest fires. Until Plant a Tree supporters acted. Now, your donations are helping to bring hundreds of thousands of native trees to the slopes of this extinct volcano. Read on to discover the impact you're making alongside WLT partner Nature Kenya for the species and communities all around Africa's second highest peak.



Nature Kenya Restoration Areas

- Complete
- Ongoing
- Protected Area



THE SPECIES YOU'RE HELPING



African Savanna Elephant



Lion



African Leopard

YOUR IMPACT AT A GLANCE

- Your decision to support Plant a Tree is helping to save an iconic landscape from a fate of degradation. These were lands that were going to be subjected to another forestry cycle but with your help, Nature Kenya is now making sure they are rewilded to native forest instead
- At Mount Kenya, your donations are restoring a landscape that harbours 880 plant species, as well as 53 of Kenya's 67 African highland biome bird species, 35 forest specialist bird species and little-known, Endangered avian residents like the black-and-white Abbott's Starling
- This is also the habitat of Kenya's largest remaining forest population of African Elephants, with an estimated 2,000–3,000 individuals roaming Mount Kenya's slopes. Bongo antelopes, as well as big cats from lions to leopards, also call this landscape home
- This reforestation work is benefiting Mount Kenya communities, from the Kikuyu to the Meru and the Embu. Grouped in Community Forest Associations, they are the ones raising and planting the seedlings, and then monitoring saplings every six months

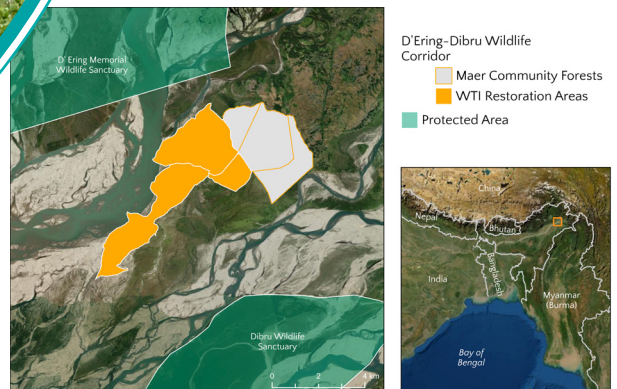
Restoring India's D'ering-Dibru elephant corridor

The impact you're making with WLT partner WTI

In northeastern India, deforestation was cornering elephant herds, forcing them to roam into crops and villages.

But now a different future is possible, thanks to Plant a Tree supporters. With help from your donations, 150,000 trees will be planted in the coming years by the communities who know this landscape best.

Local jobs created, a corridor restored for elephants, tigers and leopards – and you're making it all possible.



YOUR IMPACT AT A GLANCE

- It's hard to overstate the importance of the restoration project you're supporting. The Assam and Arunachal Pradesh states are home to >75% of the 9,000 Asian Elephants thought to live in India's northeast, and this corridor is a conservation priority
- And it's not just elephants. Species from Tiger to Leopard, Wild Water Buffalo and India's only ape (the Western Hoolock Gibbon) all live here, as well as a Critically Endangered bird (the Bengal Florican) estimated to only number 350-1,500 individuals across its entire range
- With help from your donations, reforestation is linking degraded forest fragments for all these species to travel in safety. The 32 native species being planted mimic the original landscape, like the tropical Chukrasia trees known as the Indian mahogany
- Local Adi and Mishing communities are the engine of this project. WTI has been hiring villagers for nursery management, quality seedling production, restoration site preparation and tree-planting, with our partner stepping in to provide training in all these areas

THE SPECIES YOU'RE HELPING



Asian Elephant



Tiger



Western Hoolock Gibbon

Seeds of a better future

The UN Sustainable Development Goals
advanced by your Plant a Tree donations

If tree-planting is to make the necessary impact in this crucial UN Decade on Ecosystem Restoration, it must be led by – and unlock a better future for – the communities who know first-hand the ecosystems, the life they harbour and the threats it faces. Your Plant a Tree donations are supporting holistic projects that place local people at the centre of reforestation efforts, from the Bornean women who are offered a conservation career as tree-planters; to the Kenyan villages who lead tree-planting to protect a water source crucial to the community; the Brazilian municipalities who enjoy new tree-planting jobs and green tax rebates; or the Indian families who see their livelihood standards lifted through tailored development plans and education activities.



Would you like to find out more about how the Plant a Tree projects
you're supporting are delivering a better future for local people?

Head on to our website for the full details or
contact us at info@worldlandtrust.org if you've got any questions.



THANK YOU TO OUR PLANT A TREE SUPPORTERS!

As the 2022 celebration of International Day of Forests gets in full swing, we want our Plant a Tree supporters to sit back and think about a particular set of forests: those you have given a new lease of life to around the world.

From Borneo to Brazil, India and Kenya, you have unlocked a better future for people and wildlife by funding the right trees in the right places. It may have been a single tree, it may have been hundreds; but whatever the size of your contribution, collectively it joined up with those from thousands of other people, and it made the necessary impact.

Our Plant a Tree supporters, our conservation partners and the local communities who lead the reforestation projects – together we're Generation Restoration, together we're helping to rewild the planet.

From all of us at WLT: thank you once more.

World Land Trust, Blyth House, Bridge Street, Halesworth, IP19 8AB, Suffolk | UK Tel: 01986 874422 Fax: 01986 87422 | Email: info@worldlandtrust.org

worldlandtrust.org



© Nature Kenya

Registered Charity 1001291