

Protecting a wealth of wildlife in Caribbean Guatemala



Treasure Chest Appeal

Caribbean Guatemala



Message from WLT Patron Steve Backshall

“World Land Trust never fails to inspire me! This project is, as they say, a real Treasure Chest. The wildlife is incredible in the mountain forests of Caribbean Guatemala. We'll be saving tiny frogs found nowhere else on earth right up to big cats including Jaguar. Thank you!”

World Land Trust's partner: Foundation for Eco-development and Conservation



WLT's overseas partner for this project, Foundation for Ecodevelopment and Conservation (FUNDIAECO), has been working for wildlife conservation in Guatemala since 1990. One of its main projects is the Conservation Coast in Caribbean Guatemala, where FUNDIAECO have already successfully protected four areas from reef to rainforest. As well as environmental protection, FUNDIAECO have extensive community development programs. This includes a very successful women's health and education program that has reached 15,000 women and girls in their project areas.

How can I help?

You can help protect the green gold of the Caribbean by donating to the Treasure Chest Appeal.

Your donation will support the land purchase and long-term protection of a 2,500 acre (1,000 hectare) reserve in Sierra Santa Cruz, preventing this tropical rainforest habitat from becoming Oil Palm plantations or cattle ranches.

Donations can be made by post, telephone or online.



Image credits: Cover: Sierra Santa Cruz (FUNDIAECO), Northern Tamandua (Katja Schulz), Indigo Bunting (Dan Pacamo), Fleischmann's Glass Frog (Esteban Alzate), Smooth Helmeted Iguana (Ivan Castro), Redlored Amazon (Kurt Bauschardt); Page 2: Blackburnian Warbler (Alan Schmierer), Ocelot (Shutterstock), Chinamococh Stream Frog (Carlos Vásquez Almazán), Clearance, Oil Palm and Cattle Ranch (FUNDIAECO), logging (Greg Lobinski), Carlos Humberto Ruano Garcia and river (Dan Bradbury/WLT), Page 4: Steve Backshall (Steve Backshall), Fleischmann's Glass Frog (Esteban Alzate)

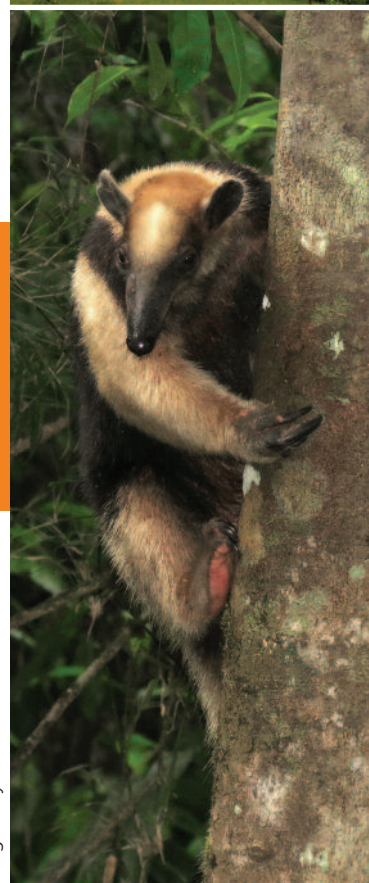


WLT Project Briefs are printed using Carbon Balanced Paper, which offers a simple way to reduce the carbon impact of the paper used for communications and support WLT's land protection projects at the same time. Ask your printer to quote on Carbon Balanced Paper.
www.carbonbalancedpaper.com

World Land Trust
Blyth House, Bridge Street,
Halesworth
Suffolk IP19 8AB, UK

Tel: +44 (0) 1986 874 422
Email: info@worldlandtrust.org

TARGET: £625,000
COUNTRY: GUATEMALA
HABITAT: TROPICAL RAINFOREST



Treasure Chest Appeal

Saving the green gold of the Caribbean



A real treasure chest of species can be found in the mountains of Guatemala. On the Caribbean coast, between the borders for Belize and Honduras, is the Sierra Santa Cruz, a mountain range covered with tropical rainforest.

These mountains are surrounded by land cleared for Oil Palm plantations and cattle ranches, and now the core of rainforest in the mountains is under threat. To protect this unique ecosystem from deforestation, World Land Trust (WLT) have teamed up with local partner Foundation for Ecodevelopment and Conservation (FUNDAECO), to create a wildlife reserve of approximately 2,500 acres (1,000 hectares) in Sierra Santa Cruz.

This mountain range has 251 recorded bird species, including threatened species such as the Great Tinamou, Great Curassow, Ornate Hawk-Eagle and King Vulture, and American migratory species, including Swainson's Hawk and Blackburnian Warbler (pictured left).

The 142 species of mammals include several cat species such as Jaguar, Puma, Margay, Jaguarundi and Ocelot (pictured left) and other endangered species including Baird's Tapir and Black Howler Monkey.

Sierra Santa Cruz is also home to an exceptionally high number of endangered amphibians, including two Critically Endangered frogs that are endemic to the mountain range (the Chinamococh Stream Frog, *Ptychohyala sanctaerucis*, is pictured left), making it an Alliance for Zero Extinction (AZE) site.

TARGET: £625,000
COUNTRY: GUATEMALA
HABITAT: TROPICAL RAINFOREST



Sierra Santa Cruz, Caribbean Guatemala



The reserve in Santa Cruz will protect around 2,500 acres (1,000 hectares) of tropical rainforest in the mountains from the deforestation which surrounds it

Threats facing Sierra Santa Cruz

Why does this mountain need protecting?



Without protection, the core rainforest in the Santa Cruz mountains will be cleared, the biodiversity of plant and animal species lost to monocultures

Oil Palm plantations

African Oil Palm is a highly lucrative crop which flourishes in the warm and wet conditions typical of rainforest regions. As the product (Palm Oil) is under high demand, there is increasing pressure worldwide to clear rainforest. Guatemala's Oil Palm plantations have the highest productivity per hectare in the world, so the industry has been growing rapidly and putting a lot of pressure on clearing unprotected forests.

Cattle ranching

Cattle ranching is a low-investment but productive industry in Guatemala, which produces beef for local consumption and exports to other countries in Central America. Oil Palm plantations and cattle ranches are the main causes of deforestation in the region around Sierra Santa Cruz.

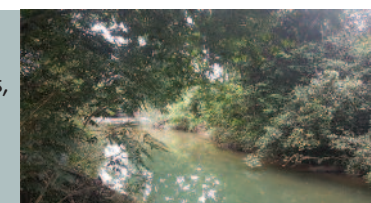
Illegal logging

Illegal logging is a problem for the unprotected forests of Santa Cruz, particularly for the extraction of rosewood. Rosewood is the world's most trafficked wild product, as the deep pink-red timber is highly sought after in China for carved furniture, and it is illegally exported from more than 80 countries across the tropics, including Guatemala.



Importance for the community

This reserve will protect the sources of 8 rivers, providing fresh water to 18 communities in Sierra Santa Cruz. Without the forest this watershed would be compromised, affecting the livelihoods of all the people who depend on it, so this reserve is vital for both people and wildlife.



A freshwater river sourced in the mountains of Santa Cruz