

Saving wilderness habitats and their wildlife, throughout the world

World Land Trust



**Annual Review & Accounts
2003**



Registered Charity: 1001291

PATRONS: Sir David Attenborough, CH FRS
David Gower, OBE

TRUSTEES, 2003:
Bruce Pearson (from December)
Gil S. Child
Jane Krish
Adrian Penrose
Nigel Simpson

CHAIRMAN OF TRUSTEES:
Professor Renton Righelato

OFFICERS:
Dr G A Bertrand (Hon. Charman)
John A. Burton* (Chief Executive)
Mark Leaney (Hon. Treasurer)

SPECIAL ADVISOR:
Iain Orr
Jonathan Self

PARTNER ORGANISATIONS:

Fundación Patagonia Natural
Executive Director: Jose Maria Musmeci

Fundación Jocotoco (Ecuador)
UK: Dr Nigel Simpson
Ecuador: Francisco Sornoza
USA: Byron Swift, World Parks Endowment

Wildlife Trust of India
Executive Director: Vivek Menon

Philippine Reef & Rainforest Conservation Foundation Inc.
Project Director: Gerardo L. Ledesma

Belize Audubon Society
Executive Director: Anna Dominguez Hoare

Programme for Belize
Executive Director: Edilberto Romero

Massachusetts Audubon Society (USA)
Liaison: Bancroft Poor

TUVA Foundation (Costa Rica)
Exec Director: Dr Manuel Alonso

STAFF DURING 2003

Head, Communications & Green Ink: Vivien G. Burton*

Projects Co-ordinator & Head of Training: Kirsty Burgess

Administrator: Claire Millard

Admin. Assistant: Anne Clifford*

Finance Officer: Debbie Hall*

Trainee Web Manager: Helena Akerlund

Computing Support: Rik Engel*

Publications Support: Antony Bowring*

Press & PR: Frances Donnelly*

Project Interns: Emma Flaxman**
Emma Page**
Molly St George**

* part-time Consultants
** unpaid Interns

PATRON'S MESSAGE



Sir David Attenborough, CH FRS

It was a privilege for me to host an event at the Linnean Society of London for the WLT, launching an appeal in memory of a great friend and colleague of mine, Christopher Parsons. Chris Parsons was former Head of the BBC Natural History Unit and my producer on *Life on Earth*; he was also a trustee of the World Land Trust and worked tirelessly during his lifetime on environmental issues both at home and abroad. The level of support we were able to raise in his memory gives an indication of his popularity and respect and I believe that the reserve we have been able to create in his memory in Ecuador is a fitting tribute to a wonderful conservationist.

My links with the WLT go back very many years before it was established in 1989—indeed, as far back as 1976 while I was working on *Life on Earth*. Those who watched the programme will recall that, while filming in Rwanda, we were alerted to the plight of the Mountain Gorillas. With John Burton, WLT's Chief Executive, who was, at that time, working for the Fauna Preservation Society (now Fauna and Flora International) we were able to launch the Mountain Gorilla Project which, over the subsequent years has successfully halted the demise of these wonderful animals.

When John Burton contacted me in 1989 to ask whether I would support a brand new rainforest initiative in Belize I was pleased to give it my backing. Since then I have watched as the WLT has gone on to purchase and protect critically endangered tracts of land to protect it acre by acre for the future.

I have been immensely lucky in that my professional work has taken me to all corners of the world where I have been able to see first hand some of the rarest and most spectacular wildlife on earth. But the fate of the creatures which share our planet lies entirely at the hand of mankind - it is within our power to protect them or watch them become extinct. Let us choose the first route.



CHAIRMAN'S REPORT



Left: *WLT* Chairman, Professor Renton Righelato with Helena Akerlund, *WLT's* Web Manager, carrying out management work on the *WLT's* reserve at Kites Hill reserve near Painswick, in Gloucestershire.

Over the fifteen years of its work the World Land Trust has gained an enviable reputation for the effectiveness of its projects, that throughout the world, are conserving thousands of endangered species and hundreds of thousands of hectares of irreplaceable habitats. The projects are successful on the ground because Chief Executive, John Burton, and his small team select and support excellent local partner organisations and engage local people in conservation.

As you will see in this report, good progress was made in 2003 with projects in Ecuador, where a series of key land purchases are being made, and in Patagonia, where, thanks to the generosity of supporters in the USA and UK who helped finance the purchase of the land, the enabling loans will be written off in 2004.

Every month brings new cries for help to save more valuable habitats and the rare animals and plants they support. This year a new project was started in India to protect a threatened population of Indian elephants, representing 20% of the world's total population.

WLT is only able to respond to these critical conservation needs because of your generous responses to appeals which enable us to buy the land and empower the local communities to play an active role in conserving 'their' wild heritage. The Trustees are delighted that so many people and organisations are also contributing as Partners to the WLT Action Fund and through legacies which are a lasting memorial to ones belief in the value of the natural world. The WLT Action Fund allows us to respond quickly as new urgent conservation needs are brought to our attention, and I would encourage everyone who supports our work to consider becoming a WLT Partner and making a legacy.

Renton Righelato

CHIEF EXECUTIVE'S REPORT

2003 was possibly the most successful year since Trust was founded in 1989. Our successes with land purchase are now widely recognised, and we are regularly approached by groups and individuals with ideas about future projects. In December 2002 we were approached by the Wildlife Trust of India about an elephant project in N E India and after careful scrutiny through the Trust's screening process we felt confident that the Wildlife Trust of India would become excellent project partners and that the elephant project itself was a high priority.

As well as working with overseas partners the Trust also strives to co-ordinate its activities with competent groups in the UK that share our objectives. It was therefore appropriate to launch the Indian Elephant corridor project with the support of the David Shepherd Foundation. David Shepherd spoke eloquently at the launch party about the elephants, and he was also very enthusiastic about the Wildlife Trust of India. The event took place at the Mall Galleries and coincided with the annual exhibition of the Society of Wildlife Artists. Bruce Pearson, the president of the SWLA, was also able to arrange for the Trust to have an exhibition about its work on display for the duration of exhibition.

A highlight of the year was welcoming Sir David Attenborough as a Patron. In July Sir David helped us launch our appeal to create a permanent memorial to his colleague, and former WLT trustee, Christopher Parsons. The appeal was a tremendous success and you can read about the reality of the Christopher Parsons Rainforest elsewhere in this report.

One particular aspect of our work which took on growing importance was the development of the Trust's web site. As more people of all ages across the world have access to the Internet we realised that this was a huge resource by which we could raise our public profile and attract more support for our projects. Peter Taylor, who joined the Trust as its first full time web manager in 2002, moved to London to work for *Friends of the Earth*, and a new trainee, Helena Akerlund joined us. By Christmas, the website had become a major source of income.

But despite the success of internet fundraising WLT supporters are still our greatest publicists, and we owe a considerable debt of gratitude to those who make regular donations and also tell others about our work. It is very gratifying to our staff to know that we have committed supporters who are helping us spread the word and raise more funds. Thank you to everyone who helped us in this way in 2003.

John A Burton

PROJECTS REPORT

Our Mission

- **To protect and sustainably manage natural ecosystems of the world to conserve their biodiversity, with emphasis on threatened habitats and endangered species.**
- **To develop partnerships with local individuals, communities and organisations to engage local support and commitment among the people who live in the project areas.**
- **To raise awareness, in the UK and elsewhere, of the need for conservation, to improve understanding and generate support through education, information and fundraising.**

2003 - An ambitious and successful year for WLT Projects

Our main targets were to complete funding obligations relating to the Ranch of Hopes project in Patagonia, continue urgent rainforest purchase in Ecuador and expand our fundraising support to a new project in India.

We explored a variety of new ways to attract funds which successfully enabled us to reach our targets and expand our activities during the year. In particular, the work on the website and the Trust's web presence attracted a significant number of new donors, and wider recognition for the Trust. New sponsors also helped our work considerably.

• India

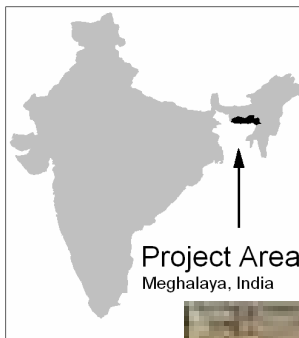
Project: Wild Lands Elephant Corridor Local Partners: Wildlife Trust of India

Following negotiations with the Wildlife Trust of India, a new project, safeguarding an area of forest for elephants, was developed. The project involves the creation of a corridor between existing protected areas in the Garo Hills of N E India. A Memorandum of Understanding between the Wildlife Trust of India and WLT was signed in July 2003 and fundraising commenced in the autumn following an exciting launch at the Mall Galleries in London.

The project works closely with the local communities who are affected by the elephant corridor, and following discussions with the 'Nokma' (tribal leader) of the Arthika village, which is located within the corridor, the local community has pledged its support. In the past the villagers have traditionally practised shifting cultivation which has resulted in the rapid depletion of the natural

forests. This level of forest fragmentation not only affects elephant survival but also increases the level of human-elephant conflict which can lead to their direct persecution.

Ensuring the survival of a 'flagship' species such as the Asian Elephant requires the protection of the whole habitat, which means that the project will also be safeguarding a wealth of irreplaceable biodiversity at the same time.



The Wild Lands Elephant Corridor Project aims to link existing protected areas through a series of three corridors. The Siju-Rewak Elephant Corridor will secure the first of the three proposed corridors.



Approximately 20% (just over 9,200 individuals) of the world's Asian Elephant population occurs in this area.

• Ecuador

Reserves at Tapichalaca, Buenaventura, Yunguilla, Utuana, Rio Canandé & Yanacocha Local Partners: Fundación Jocotoco

To date WLT's Ecuadorian partners Fundación Jocotoco has established six reserves protecting over 16,000 acres (7,000 ha). While the reserves are primarily established to protect habitat for endangered birds, many other plants and animals are protected as well. The reserves are home to over 600 species of birds of which approximately 90 are range-restricted or endemic species and 38 are globally endangered species. They also provide habitat for several species large mammals such as the Spectacled Bear, Mountain and Baird's Tapir, Puma and Jaguars.

With help from WLT supporters, land purchase at the beginning of the year added one square mile to the Tapichalaca Reserve protecting an important area between this reserve and the Podocarpus National Park. Spanning four vegetation types, Spectacled Bear and Tapir with

PROJECTS REPORT *continued*

young were seen on this land during the year. Additionally, a species of frog new to science was discovered at Tapichalaca and was named *Hyla tapichalaca*.

In July, WLT's Christopher Parsons Rainforest Appeal was launched by Sir David Attenborough which raised £20,000 (this includes matched funding by the Simpson Education and Conservation Trust.) These funds were used to purchase 2.5 square miles of lower altitude sub tropical forest which is now The Christopher Parsons Rainforest, in the Tapichalaca Reserve. A river flowing through the southern border of this new area was found to be unnamed and it was officially registered as the *Quebrada* (river) Christopher Parsons. This river is one of the most westerly tributaries of the Amazon River system.

Additionally the forest reserves at Rio Canandé and Buenaventura in the west of Ecuador were both expanded during the year. Rio Canandé protects an area of exceptional biodiversity, with dozens of endemic birds. Very little of this lowland Chocó forest has been protected, and it is all under threat from logging companies. 1,100 ha (2,240 acres) are now protected by this reserve. Buenaventura is the discovery site of the El Oro Parakeet in 1980, and further land purchase took place during the year to protect a larger portion of this parakeet's habitat to ensure its survival into the future.

• **Patagonia**

**Reserve: Estancia la Esperanza
(Ranch of Hopes Wildlife Refuge)**

Local Partners: Fundación Patagonia Natural

Despite set backs experienced by our local partners in Argentina, caused by the devaluation of the Argentinian peso, the Patagonian Coastal Steppe project was able to make progress on several fronts.

Protection measures were developed to combat the threat of fire and poaching, some refurbishment took place on the estancia buildings and scientific surveys of the area were undertaken. Largely as a result of protection, wildlife populations improved in numbers and Guanaco numbers in particular, increased significantly.

In November, WLT's Honorary Chairman, Dr Gerard Bertrand, visited Patagonia to meet with José María Musmeci and colleagues at FPN. He wrote:

"At long last I have had the pleasure of seeing the magnificent WLT property in Patagonia. Accompanied by José María and the BirdLife World Council we stood on the shore looking southwest as distant cliffs met rolling surf at the edge of the mists, recognising that everything we could see, and all the wildlife we knew to be there on this morning, was saved forever by the far-reaching action of our generous supporters."

• **Belize**

Local Partners: Programme for Belize and Belize Audubon Society

The Trust's original fundraising commitments for land purchase were successfully completed five years ago and during 2003 WLT worked with Programme for Belize and Belize Audubon Society on specific projects relating to land protection and wildlife management.

In November the WLT organised a study tour to the UK for the Executive Director of Programme for Belize, Edilberto Romero. While in the UK meetings were arranged with other British NGOs and he gave a presentation to East Anglian supporters.

With funds provided by Jaguar Cars Ltd, a group of students from the University of East Anglia carried out research on the PFB lands and in the adjacent villages.

• **Danjugan Island**

Local Partners: Philippine Reef & Rainforest Conservation Foundation.

With land purchase completed, Gerry Ledesma, Project Director of WLT's Partner organisation worked indefatigably with local communities, particularly fishermen. This resulted in the Danjugan Island Marine Reserve and Sanctuary being awarded the prestigious prize of the Best Managed Coral Reef in the Philippines. Later in the year PRRCFI made recommendations for two new marine protected areas which were unanimously supported and the reserves established.

• **Kites Hill Nature Reserve, UK**

Thanks to grants from the John Ellerman Foundation, The Linley Wightman Shaw Foundation and supporters of the 'Trees for Peanuts' campaign in 2002, work on the WLT's UK Nature Reserve in Gloucestershire continued into 2003. Despite an extraordinarily dry summer almost all the new trees survived and an exhibition board was erected listing the names of supporters who had funded the tree planting. The conversion of the farm to organic status was completed and a nature trail through the woodland was finished with the help of BTCV volunteers. Perhaps the most exciting news of the year is that after over a century of absence, Red Kites are back prospecting the area. We hope they will take up residence and Kites Hill will really live up to its name.

WLT Hosts Bulgarian Delegation

Funded by USAID, WLT was contracted to organise a Study Tour for a delegation of senior environmentalists and park managers from Bulgaria. While in the UK meetings were arranged with, among others, RSPB, BirdLife International, the National Trust and Charities Aid Foundation.

ACCOUNTS

SUMMARISED ACCOUNTS STATEMENT OF FINANCIAL ACTIVITIES FOR THE PERIOD ENDED 31ST DECEMBER 2003

	2003	2002
<u>Incoming Resources Unrestricted</u>		
Donations & Similar incoming resources	134,088	148,006
Contracts	4,000	10,000
<i>Activities for generating Funds:</i>		
Sales/ Other Income & Interest	7,376	18,230
	145,464	176,236
<u>Resources Expended Unrestricted</u>		
<i>Costs of Generating funds:</i>		
Fundraising Costs	29,927	22,645
Consultancy Fees	29,033	26,137
Cost of sales	1,081	
<u>Charitable Expenditure</u>		
Project expenditure	5,967	
Support costs	50,133	49,551
Management & Administration	6,660	10,224
	122,801	108,557
Net (outgoing) / incoming resources	22,663	67,679
Transfer between funds	-34,077	5,819
Total	-11,414	73,498
Fund balance brought forward 01/01/2003	87,009	13,511
Fund balance carried forward 31/12/2003	75,595	87,009
<u>Incoming Resources Restricted</u>		
Donations & Similar incoming resources	135,521	106,477
Sales/ Other Income & Interest		
Total	135,521	106,477
<u>Resources Expended Restricted</u>		
<i>Costs of Generating funds:</i>		
Fundraising Costs	24,130	8,472
Consultancy Fees	8,485	6,560
<u>Charitable Expenditure</u>		
Project expenditure, including transfers overseas	55,983	29,086
Support Costs	44,868	20,873
Management & Administration	4,373	3,510
	137,839	68,501
Net (outgoing) / incoming resources	-2,318	37,976
Transfer between funds	34,077	-5,819
Total	31,759	32,157
Fund balance brought forward 01/01/2003	86,186	54,029
Fund balance carried forward 31/12/2003	117,945	86,186

We confirm that the summarised accounts set out on this page are consistent with the full audited accounts certified by us without qualification on 13 July, 2004

LOVEWELL BLAKE, Registered Auditor, Chartered Accountants

TRUSTEES STATEMENT. The accounts set out on this page are a summary of information extracted from the full audited accounts. For further information the full annual accounts, the Auditor's Report and the Trustees Annual Report should be consulted; copies of these can be obtained from World Land Trust, Blyth House, Bridge Street, Halesworth, Suffolk IP19 8AB.

WLT THANKS SPONSORS DURING THE YEAR



Assisting Conservation



The Good Gifts Catalogue



kmr asset management



ENTERPRISEplants



Member of
IUCN
The World Conservation Union

THANKS & ACKNOWLEDGEMENTS



INDIVIDUALS

Albertino Abela
Sylvia Baker
Chris Burgess
Nigel Dickinson
Chris Ellwood
John Fuller
Nader Hamedi
Edward Hoare
Jonathan Hodrien
Elizabeth Jane Howard
Chris Jenkin
Rosamund Kidman Cox
Merloyd Luddington
Simon Lyster
Bruce Pearson
Jane Pointer
Bancroft Poor
Jonathan Self
David Shepherd
Melanie Shepherd
Frank Thornton
Nancy Weiss

COMPANIES

Active Consultancy
Adnams Fine Wines
BBC Wildlife magazine
British Airways
Charity Mall
Enterprise Plants
Focus Organics
Good Gifts Catalogue
Green & Black's Organic
Jaguar Cars Ltd
kmr asset management
Nationwide Building Society
Natural History Book Service
Rade New Media
Rainforest Cafe London
Stafford Railway Building Society
Wade Furniture
Wentworth Publishing

TRUSTS, FOUNDATIONS & AGENCIES

DFID Forestry Research Programme
Ethical Investors Group
Golden Bottle Trust
Leach No. 14 Trust
Linnean Society of London
Mercers Charitable Fund
Roerig Trust
Peter Smith Charitable Trust for Nature
Rossmore Trust
Society of Wildlife Artists
Simpson Education & Conservation Trust

**And thank you to all supporters who
contributed to our work in 2003**

GREEN INK SUPPORTERS

The **Green Ink** project attracts growing support from writers, illustrators and editors who donate Public Lending Rights (PLRs) in their books to the work of the Trust. Last year, WLT raised £12,490 from assigned PLRs. For a list of Green Ink supporters

please see the 2002 Annual Report, contact the WLT office or see website:

www.worldlandtrust.org.

If you are an author or illustrator with books in the Public Library Lending System, and would like to know more please contact the WLT office for details.

WLT INTERNS DURING 2003



WLT Internships last for six months and the aim of the Trust is to train conservationists of the future, who, while they are gaining valuable experience themselves, are also helping strengthen the work of the Trust.

During 2003 WLT had three interns: Emma Flaxman and, photographed above, Molly St George (*right*), and Emma Page, (*left*). The photograph was taken at the WLT Art Exhibition held

in Halesworth in July which was organised by Emma Page. They are holding original artwork donated by famous wildlife artist, Bruce Pearson.

Following the success of the Internship Programme, WLT began discussing future collaboration with the University of East Anglia with a view to developing an accredited Diploma in Conservation and Project Administration, for 2004.

Thanks to NHBS

WLT *Books for Conservation* Project helps non-government conservation organisations in developing countries by providing important reference books. Used and slightly damaged books on conservation, wildlife and the environment are donated for this purpose by the **Natural History Book Service**.

Focus on Forests



In 2002 WLT was contracted by the Forestry Research Programme (FRP) to create a Multi-Media Resource on Tropical Forestry for use by teachers and Key Stage 3 pupils. The website was completed in 2003 and was launched at the Rainforest Café London in March, by Bill Oddie.

www.focusonforests.org

Pictures from the Patagonia and Ecuador Projects, 2003



World Land Trust working with local Partners, **Fundación Patagonia Natural (FPN)** in Patagonia and **Fundación Jocotoco (FJ)** in Ecuador



In Patagonia

Right: 'Princesa' was an orphan guanaco who was rescued and successfully reared by FPN volunteers on the Ranch of Hopes. FPN is playing an increasing role in rescue and rehabilitation of coastal steppe wildlife.

As a result of protection on the Ranch, guanaco numbers have risen from 300 to 500.

Above left: FPN Volunteers made this greenhouse utilising recycled 'rubbish'; it is made primarily of plastic bottles.

Below left: Gustavo Zamora (the Manager at the Ranch of Hopes Wildlife Refuge) and family.

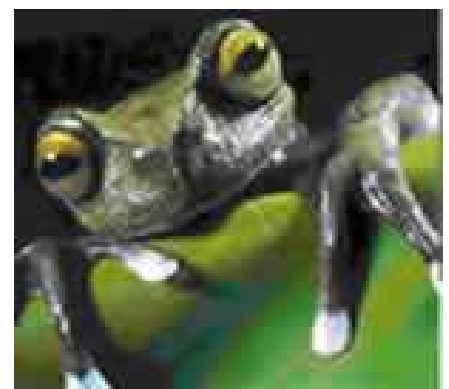


Right: Children in the town of Valladolid, near the Tapichalaca Reserve, enjoy using binoculars to look at the visitors to the hummingbird feeders recently installed. Francisco Sornoza, Exec Director of FJ, is top left.

Below right: A frog new to science was discovered on the Tapichalaca Reserve in 2003, and has subsequently been named *Hyla tapichalaca*.

Below: With funds raised in memory of former WLT Trustee, Christopher Parsons, it was possible for FJ to purchase the ridge of tropical forest in the centre of the photograph. This is now known as the Christopher Parsons Rainforest and is part of the Tapichalaca Reserve.

In Ecuador



Picture credits:
Cover: Nigel Simpson,
Page 2: Sir David Attenborough/BBC
Page 3: WLT
Page 4: Wildlife Trust of India
Page 7: WLT
Backpage: Top three pictures, Emma Page/ WLT, Bottom left and right: Nigel Simpson, Bottom right: Luis A. Coloma (*Hyla* images)